

PART OF THE NW 1/4, SEC. 24, T.6N., R.2W., S.L.B. & M.
MARRIOTT BUSINESS PARK SUBDIVISION – PHASE 1

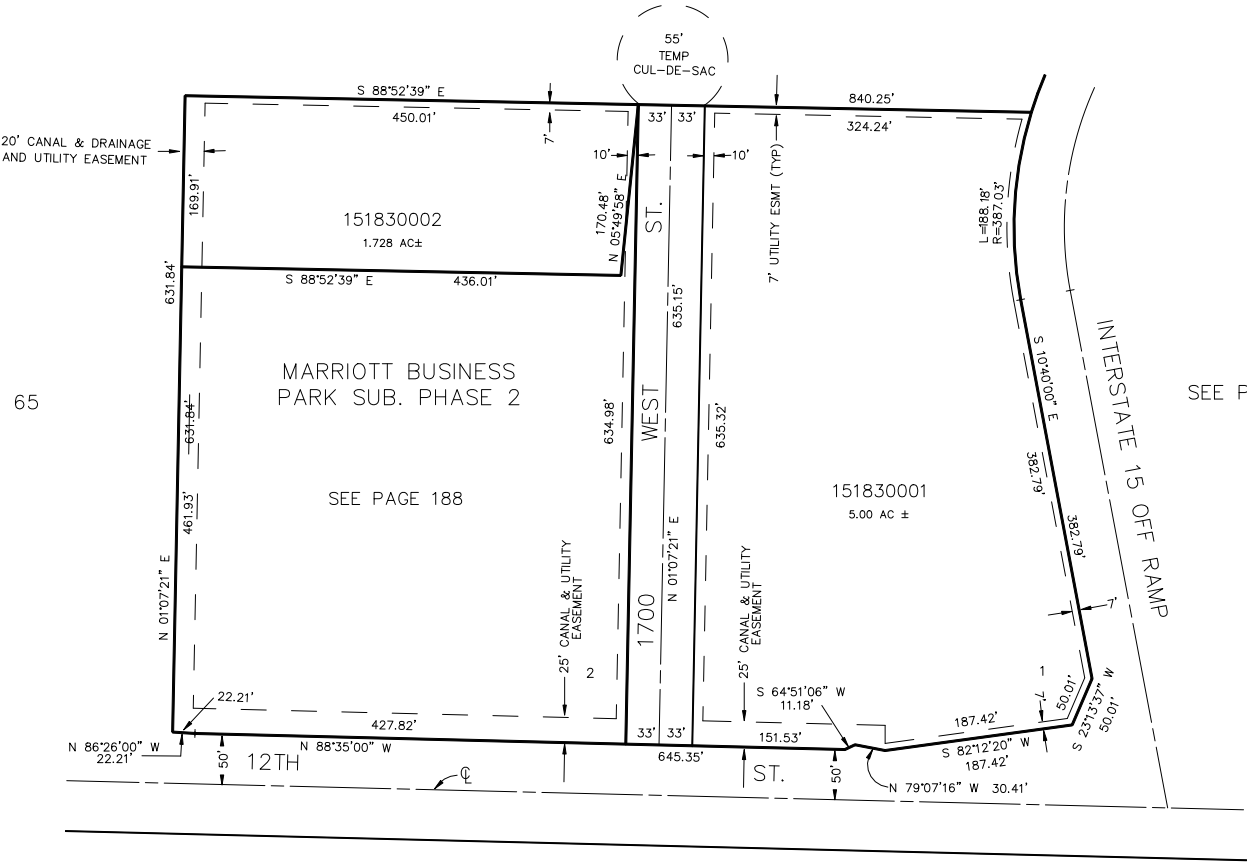
IN WEBER COUNTY
SCALE 1" = 100'

TAXING UNIT: 17

SEE PAGE 65

SEE PAGE 65

SEE PAGE 65



SEE PAGE 65

UTILITY & DRAINAGE EASEMENTS EACH
SIDE OF PROPERTY LINES AS INDICATED
BY DASHED LINES.

FOR COMPLETE ENG DATA SEE
ORIGINAL DEDICATION PLAT IN
BOOK 32, PAGE 95 OF RECORDS.